



VILLAS A1 → A3

Villa 3 storey, 4 bedrooms 626 → 673 m²

- infinity pool
- well-equipped kitchen
- private deep well water
- electricity by government

Optional equipment

- Indoor and outdoor furniture
- Layout of the multipurpose room (cinema room, recreation room, ...)

Ground floor :

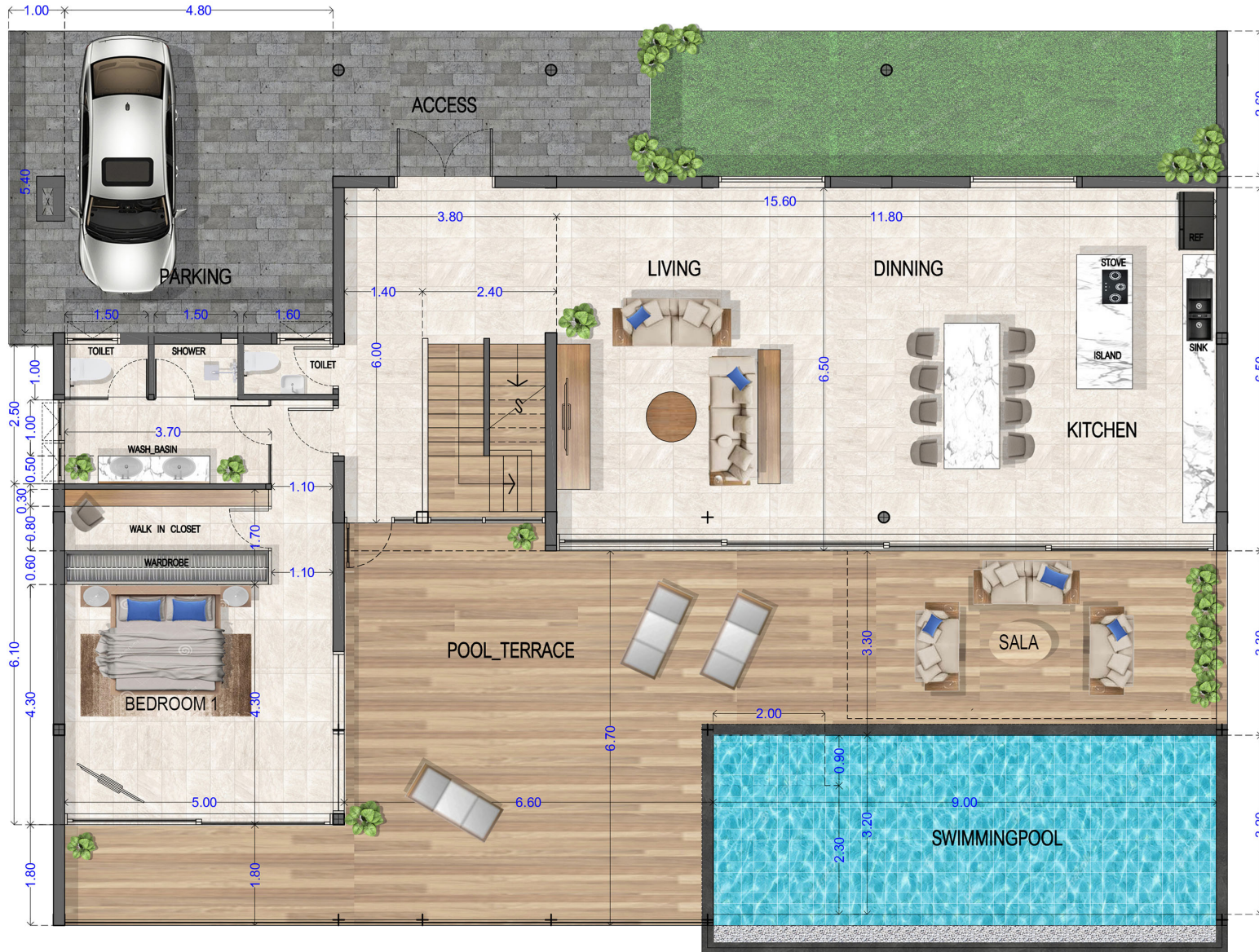
- Parking 26 m²
- Entrance 21 m²
- Living, Dinning & Kitchen 73 m²
- Bedroom 2 23.5 m²
- Walk-in Closet 6 m²
- En-suite Bathroom 8.5 m²
- Terrace 87 m²
- Swiming pool 28 m²

Second floor :

- Bedroom 1 27 m²
- En-suite Bathroom 8 m²
- En-suite Terrace 13 m²
- Bedroom 3 18.5 m²
- En-suite Bathroom 15.5 m²
- En-suite Terrace 9 m²
- Bedroom 4 19.5 m²
- En-suite Bathroom 14 m²
- En-suite Terrace 6 m²

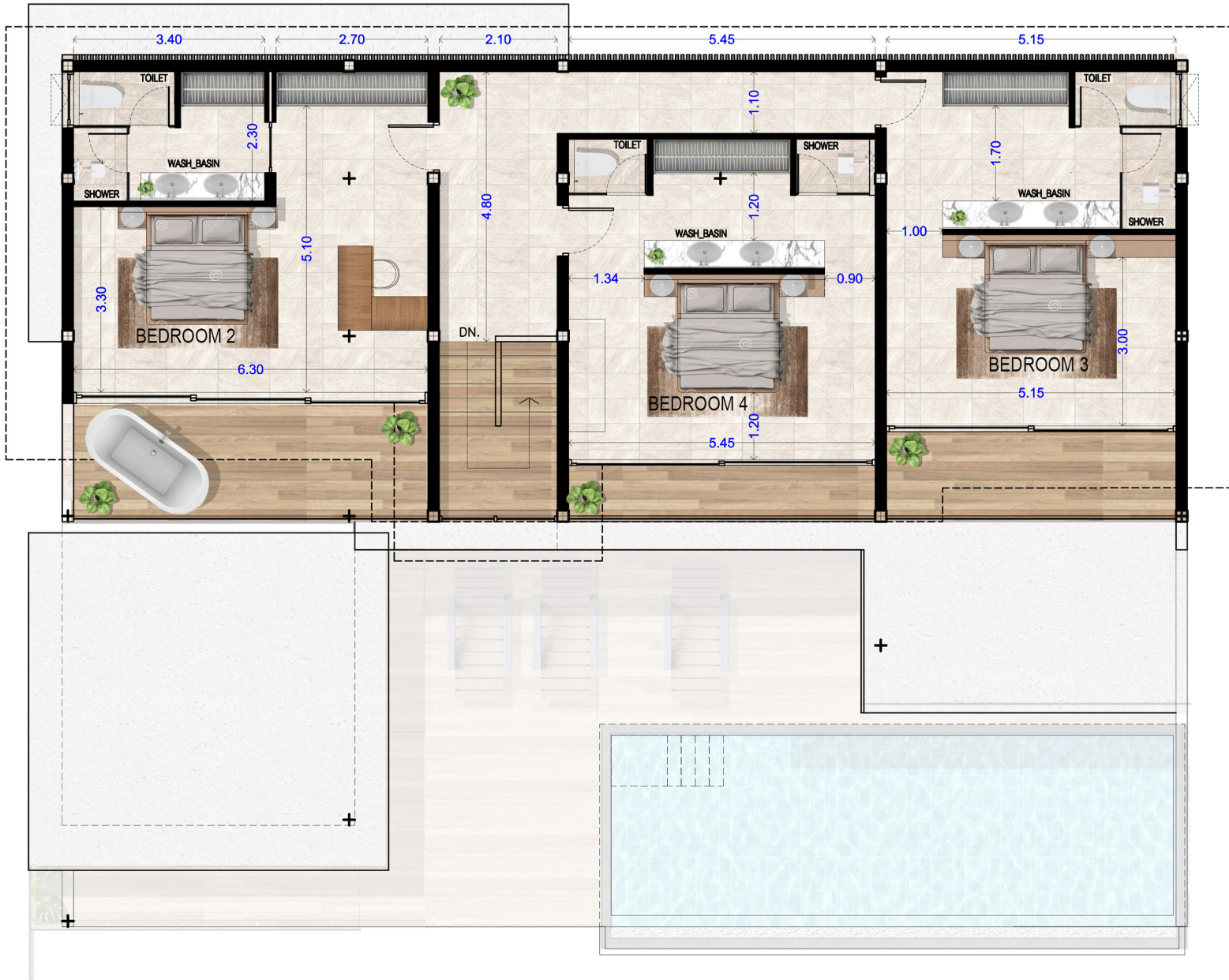
Basement floor :

- Multipurpose room 97.5 m²
- Storage / Bedroom 5 45 m²
- Laundry 9.5 m²
- Pump room 7 m²



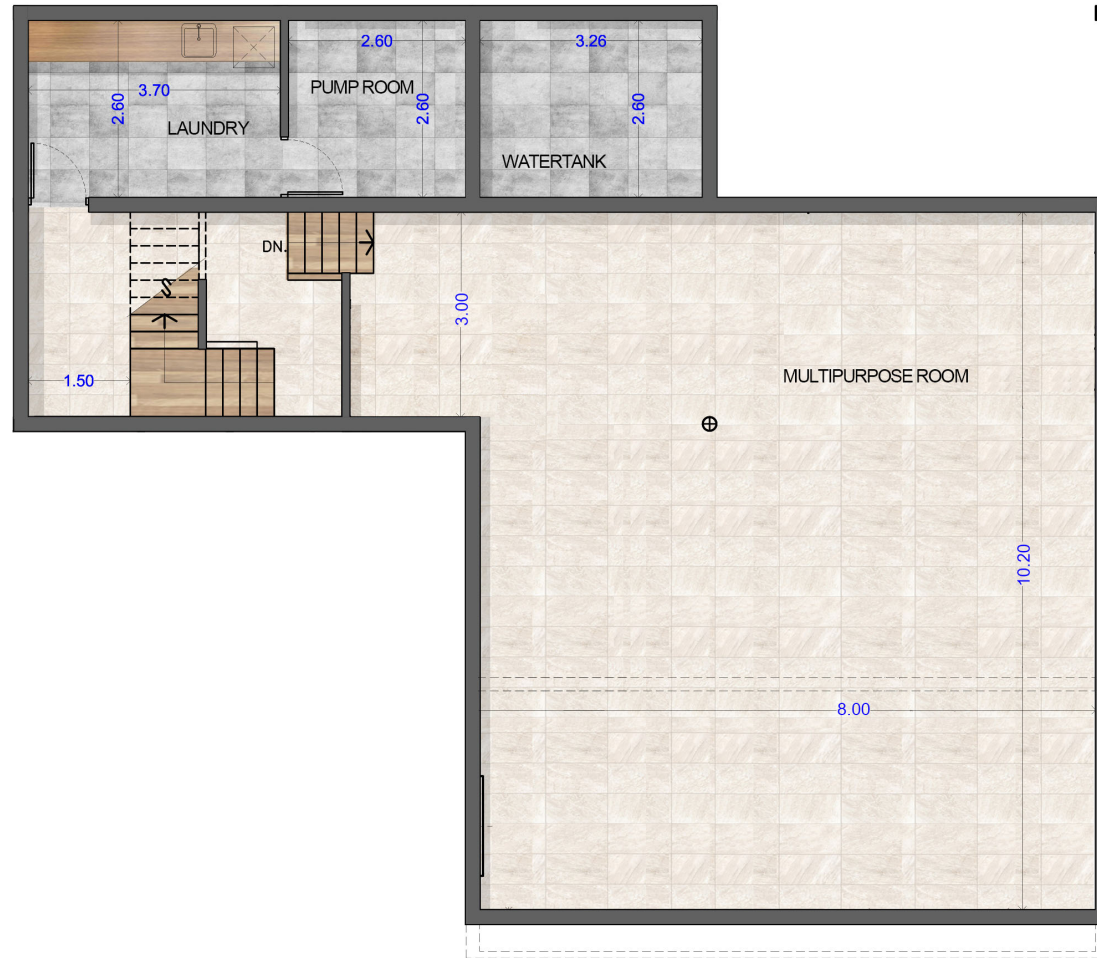
VILLAS A1 → A3 - GROUND FLOOR

INTERNAL	152 sqm
EXTERNAL	152 sqm
GROUND FLOOR AREA	304 sqm
TOTAL HOUSE AREA	626 sqm



VILLAS A1 → A3 - SECOND FLOOR

INTERNAL	143 sqm
EXTERNAL	28 sqm
SECOND FLOOR AREA	171 sqm
TOTAL HOUSE AREA	626 sqm

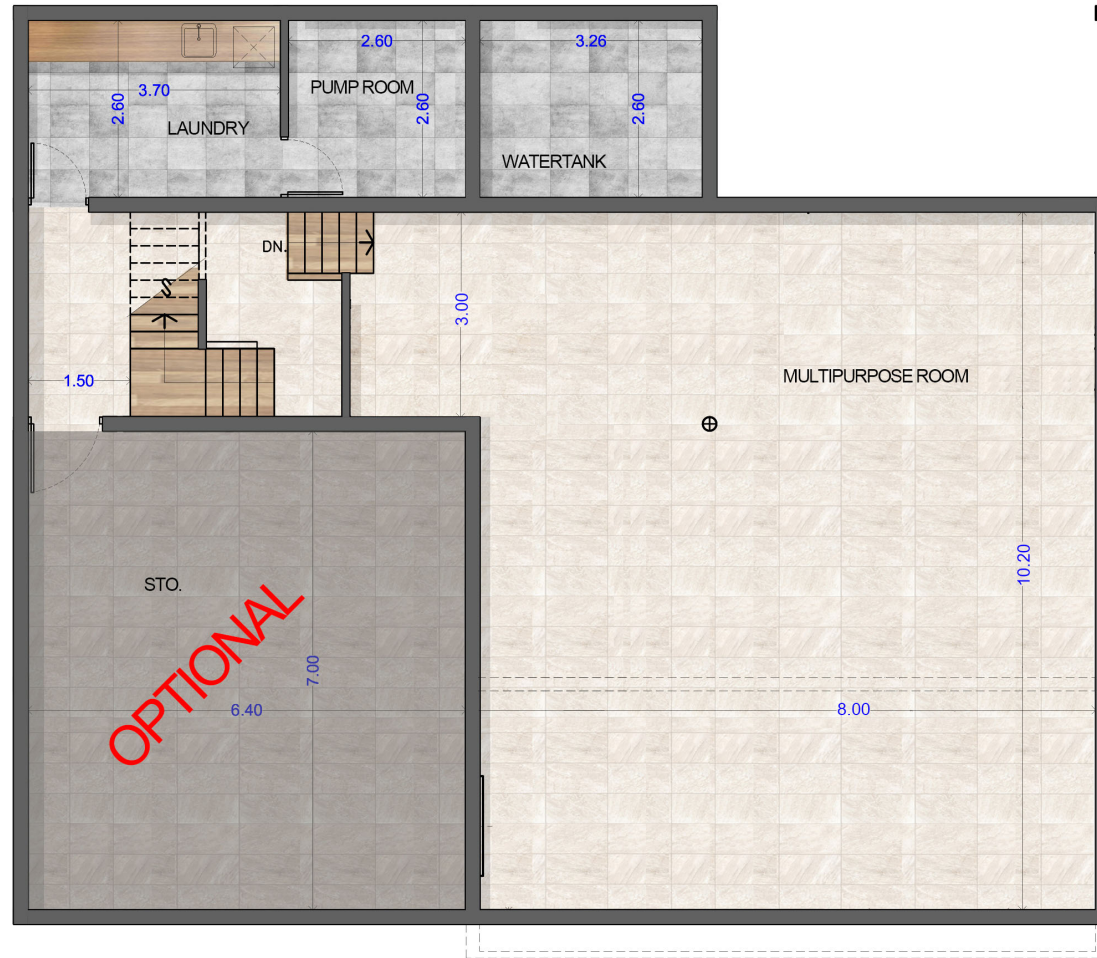


VILLAS A1 → A3 - BASEMENT

INTERNAL	151 sqm
EXTERNAL	0 sqm
BASEMENT AREA	151 sqm
TOTAL HOUSE AREA	626 sqm

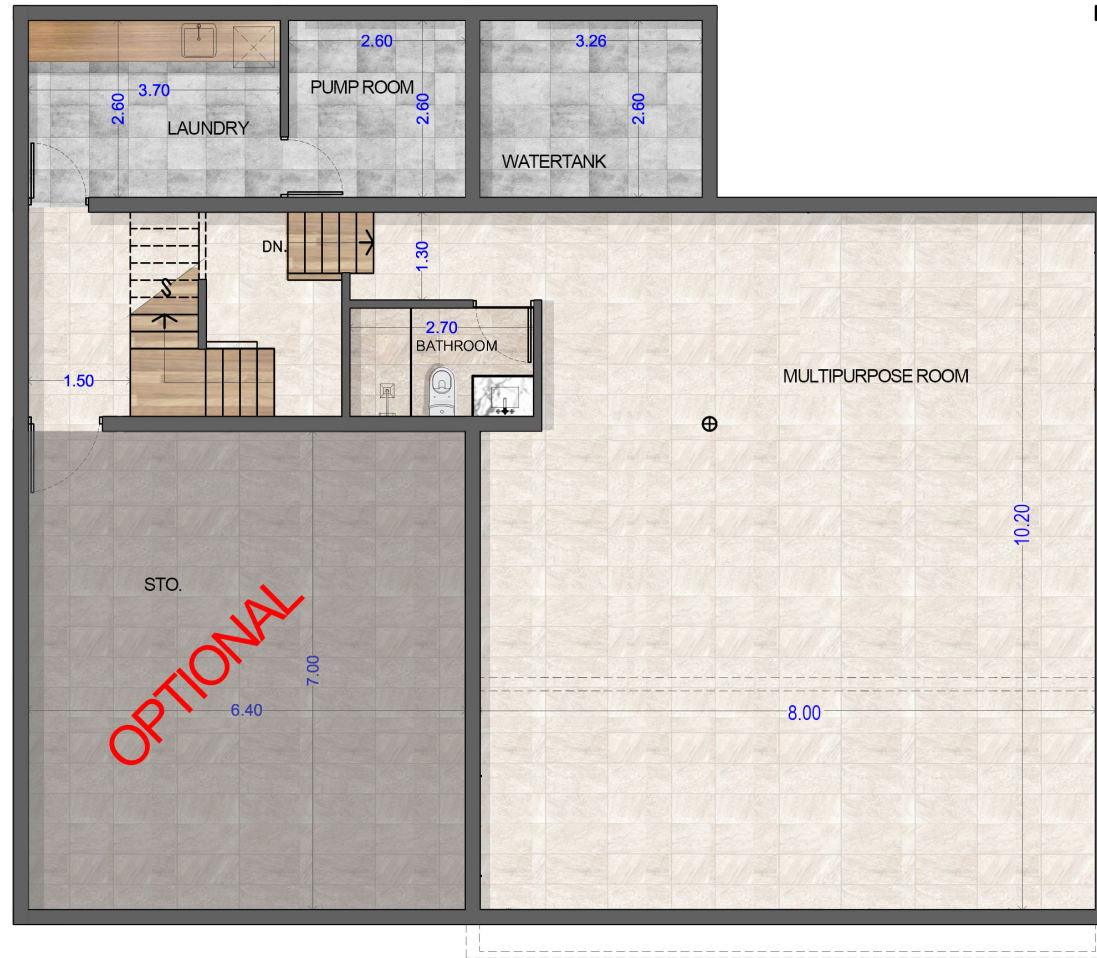
SWIMMINGPOOL LINE

SWIMMINGPOOL LINE



VILLAS A1 → A3 - BASEMENT

INTERNAL	198 sqm
EXTERNAL	0 sqm
BASEMENT AREA	198 sqm
TOTAL HOUSE AREA	673 sqm



VILLAS A1 → A3 - BASEMENT

INTERNAL	198 sqm
EXTERNAL	0 sqm
BASEMENT AREA	198 sqm
TOTAL HOUSE AREA	673 sqm

SWIMMINGPOOL LINE

SWIMMINGPOOL LINE



VILLAS A1 → A3 - BASEMENT

INTERNAL	198 sqm
EXTERNAL	0 sqm
BASEMENT AREA	198 sqm
TOTAL HOUSE AREA	673 sqm



VILLAS A1 → A3 - BASEMENT

INTERNAL	198 sqm
EXTERNAL	0 sqm
BASEMENT AREA	198 sqm
TOTAL HOUSE AREA	673 sqm