



VILLAS A4, B1 → B3

Villa 3 storey, 4 bedrooms 592 → 639 m²

- infinity pool
- well-equipped kitchen
- private deep well water
- electricity by government

Optional equipment

- Indoor and outdoor furniture
- Layout of the multipurpose room (cinema room, recreation room, ...)

Ground floor :

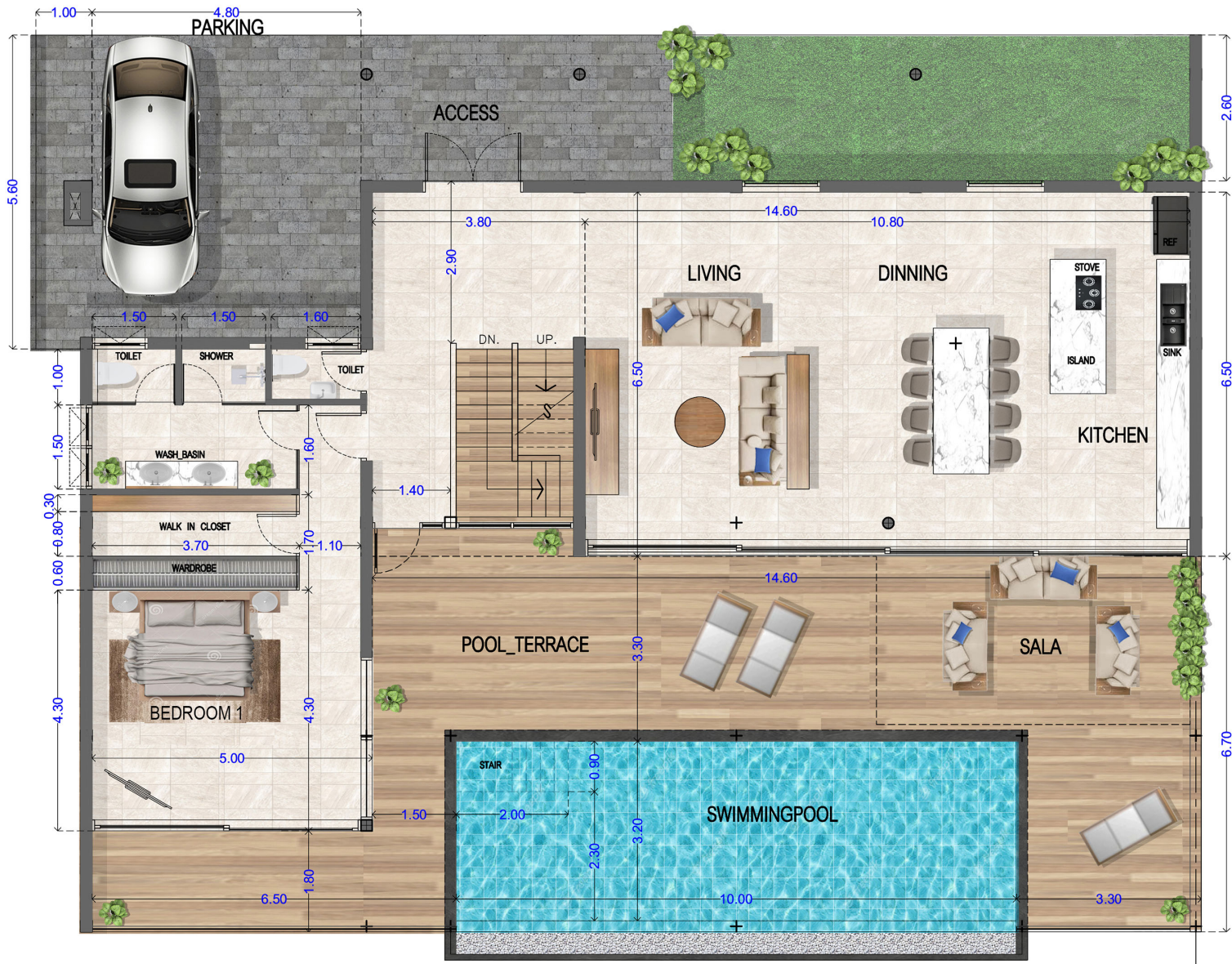
- Parking 26 m²
- Entrance 21 m²
- Living, Dinning & Kitchen 67.5 m²
- Bedroom 2 23.5 m²
- Walk-in Closet 6 m²
- En-suite Bathroom 8.5 m²
- Terrace 72.5 m²
- Swiming pool 32 m²

Second floor :

- Bedroom 1 27 m²
- En-suite Bathroom 8 m²
- En-suite Terrace 13 m²
- Bedroom 3 17 m²
- En-suite Bathroom 14.5 m²
- En-suite Terrace 8 m²
- Bedroom 4 18 m²
- En-suite Bathroom 12.5 m²
- En-suite Terrace 5.5 m²

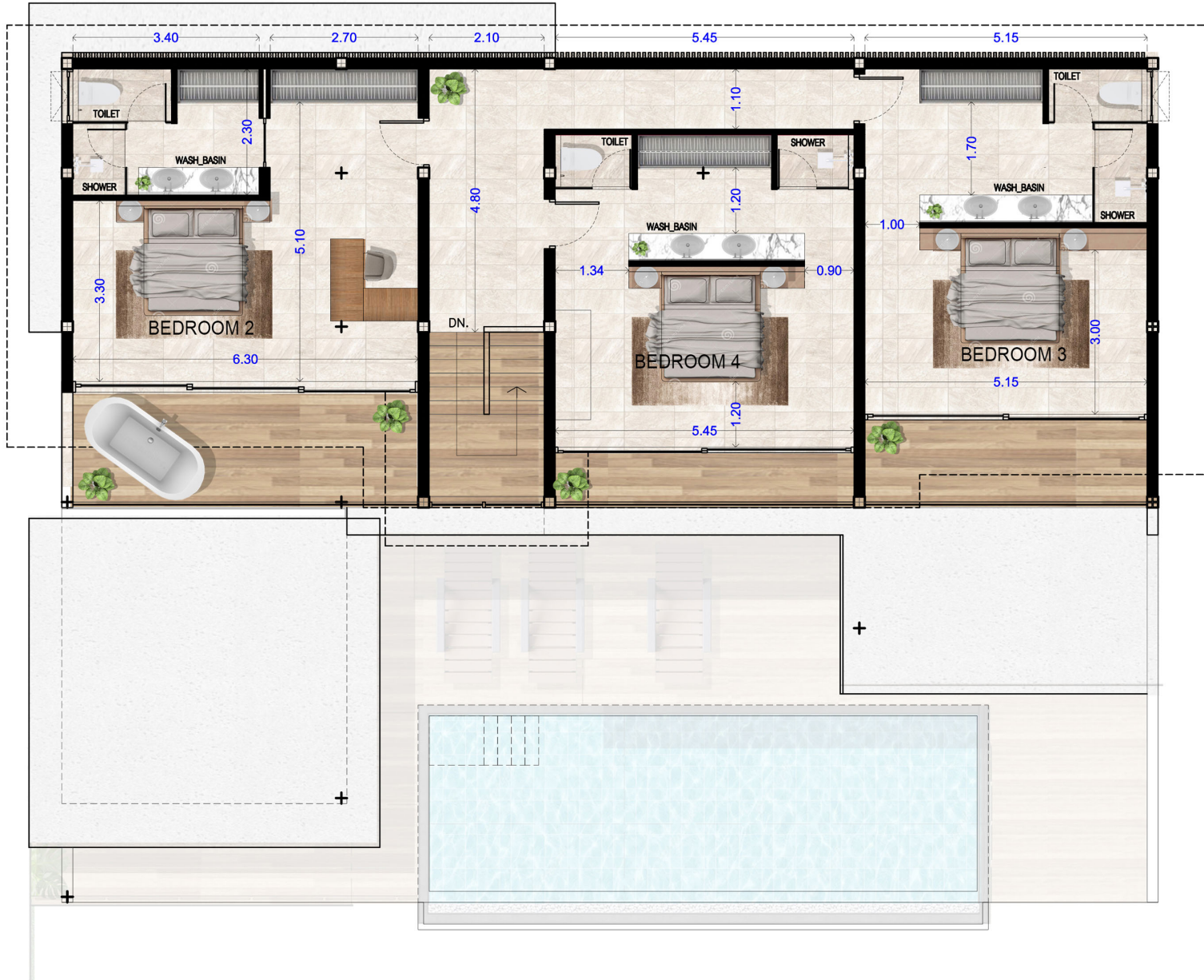
Basement floor :

- Multipurpose room 86.5 m²
- Storage / Bedroom 5 45 m²
- Laundry 9.5 m²
- Pump room 7 m²



VILLAS A4, B1 → B3 - GROUND FLOOR

INTERNAL	143 sqm
EXTERNAL	147 sqm
GROUND FLOOR AREA	290 sqm
TOTAL HOUSE AREA	592 sqm



VILLAS A4, B1 → B3 - SECOND FLOOR

INTERNAL	136 sqm
EXTERNAL	27 sqm
SECOND FLOOR AREA	163 sqm
TOTAL HOUSE AREA	592 sqm



VILLAS A4, B1 → B3 - BASEMENT

INTERNAL	139 sqm
EXTERNAL	0 sqm
BASEMENT AREA	139 sqm
TOTAL HOUSE AREA	592 sqm



VILLAS A4, B1 → B3 - BASEMENT	
INTERNAL	186 sqm
EXTERNAL	0 sqm
BASEMENT AREA	186 sqm
TOTAL HOUSE AREA	639 sqm



VILLAS A4, B1 → B3 - BASEMENT	
INTERNAL	186 sqm
EXTERNAL	0 sqm
BASEMENT AREA	186 sqm
TOTAL HOUSE AREA	639 sqm



VILLAS A4, B1 → B3 - BASEMENT

INTERNAL	186 sqm
EXTERNAL	0 sqm
BASEMENT AREA	186 sqm
TOTAL HOUSE AREA	639 sqm



VILLAS A4, B1 → B3 - BASEMENT	
INTERNAL	186 sqm
EXTERNAL	0 sqm
BASEMENT AREA	186 sqm
TOTAL HOUSE AREA	639 sqm